


PERSONAL NAVIGATOR



Sunrise: 6:07 a.m. Sunset: 6:43 p.m.
 Evening Attire: Cruise Casual
 All Ashore: Approx: 10:45 a.m.
 Last Tender: 4:30 p.m.
 Monday: Sunny High: 81°F/27°C
 Tuesday: Partly Cloudy High: 79°F/26°C

MONDAY, APRIL 15, 2013

GRAND CAYMAN



T·H·E RICKY KALMON HYPNOSIS SHOW

The ONLY Comedy Show Where the Audience Becomes The Stars!®

WALT DISNEY THEATRE

Deck 3 & 4 Forward

6:15 p.m. & 8:30 p.m.



Assistance available at the entrance to the Walt Disney Theatre 30 minutes prior to show time.

As Seen on
Disney Channel's
Snap

Grand Cayman Port Information

The Cayman Islands were first sighted by European explorers in 1503, in a wayward voyage headed by Christopher Columbus. Though the two smaller islands were discovered on this fateful trip, the largest of them, Grand Cayman, would escape attention by sailors until 1655, when the area was claimed by the British. For centuries from the time of their discovery, the Cayman Islands would provide a place for ships to come ashore and rest on their journeys into the Caribbean. Crewmen on these ships would routinely replenish themselves on the meat provided by the native population of turtles.

By the 19th century, Grand Cayman was overtaken by pirates. It would take political upheaval and the establishment of a local government under British rule to transform the island into what it is today.

Discover a place that—once a welcome refuge for buccaneers—is today a treasured tourist hotspot. From sparkling surf to the bounty of local shops, whatever your pleasure, you'll find it here.



Get ready for a jammin', slammin', splash splashin' good time at the new Disney Channel Poolside Jam Fest at Sea! Imagine all of your favorite Disney Channel music stars coming together for an afternoon of contests, great music, and hot videos all under the Caribbean sun!

Deck Stage,
Deck 11, Midship,
4:30 p.m.

Don't Miss:

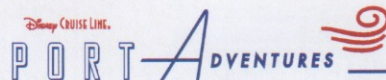
Disney Animation: Cartoon Physics
D Lounge, Deck 4, Midship - 9:00 a.m. & 4:00 p.m.
 Go behind the scenes at Walt Disney Animation Studios and see how flat drawings and pencil lines can come to life through basic techniques such as "Stretch and Squash", and create your own "bouncing ball" animation exercise in this entertaining and fun enrichment program.

Art of The Theme Show Tour (18+)
Pre-Book at Guest Services, Deck 3, Midship
 Join us on a guided ship tour and discover the key ingredients that make the Disney Fantasy cruise ship one-of-a-kind.

London Rocks (18+)
The Tube, Deck 4, Aft - 11:00 p.m.
 Hop onboard and hit the dance floor as we take you on a ride through the charts, partying it up to some of the hottest British hits! With a special performance by the Underground Dancers.

DOCKING - Please refer to Tender Letter

The ship anchors outside of the port and Guests take a tender to the dock. Tenders are small boats that provide transportation between the ship and the shore. Guests with special needs/disabilities wishing to leave the ship should check with Guest Services for accessible gangways.



IMPORTANT INFORMATION

Please check your tour tickets for meeting times and locations. Visit the Port Adventures Desk, Deck 5, Midship for any questions.

DINNER MENU
 Animator's Palate: Pacific Rim Cuisine
 Enchanted Garden: Continental Market Cuisine
 Royal Court: French Dinner Cuisine

DRINK OF THE DAY
 Yellow Bird (Alcoholic)
 Lava Smoothie (Non Alcoholic)

IMPORTANT NUMBERS
 Fire/Security: 7-3001
 Medical Emergency: 7-3000
 Health Center: 7-1923

FUN FOR ALL AGES HIGHLIGHTS



JAKE & THE NEVERLAND PIRATES

D Lounge, Deck 4, Midship - 8:30 a.m.

A'HoY there mates, Join us for an adventure in D Lounge with Jake and the Neverland Pirates.

DIAMOND AND GEMSTONE SEMINAR

La Piazza, Deck 4, Aft - 9:00 a.m.

Join your Port Shopping Guides, Johan & Marissa to learn about exotic Caribbean gemstones, Tanzanite & Diamonds. This is your chance to become a gemstone expert and an educated shopper. FREE Tanzanite Earrings and a raffle to win a Tanzanite Pendant for all in attendance.

DISNEY TRIVIA

O'Gills Pub, Deck 4, Aft - 10:00 a.m.

Navigate your way through another round of questions to test how much you really know about Disney.



CHIP-IT GOLF (12+)

Lobby Atrium, Deck 3, Midship - 2:30 p.m.

It's par for the course for our Guests 12 and older to compete on our special "greens" in this fun tournament.

JAM FEST AT SEA

Deck Stage, Deck 11, Midship - 4:30 p.m.

Are you ready for a jammin' good time? Imagine your favorite Disney Channel music and stars coming together to create the biggest Jam Fest at Sea! Great music, cool music videos and hot dance moves that are off the charts. Come out to be part of the action!



PLAYHOUSE D LOUNGE

D Lounge, Deck 4, Midship - 5:15 p.m.

Calling our youngest of cruisers! Here is a special Playtime that is just for you. Come meet new friends and join in on the fun as your Cruise Staff team takes you through interactive activities made just for you!

SO YOU THINK YOU KNOW YOUR FAMILY?

The Tube, Deck 4, Aft - 7:30 p.m.

Find out how well you know, or don't know your family! This fun-filled family game show is always full of surprises. Find out how well you know, or don't know your family!

ADULT ACTIVITY HIGHLIGHTS

SENSES SPA FITNESS CLASSES & SEMINARS

Sunrise Stretch - Donald's Pool - 7:00 a.m.

Fab Abs - Donald's Pool - 7:30 a.m.

Body Sculpt Boot Camp (Nom. Fee) - Senses Fitness Center - 9:00 a.m.

Group Cycling - Senses Fitness Center - 4:00 p.m.

Fab Abs - Senses Fitness Center - 5:00 p.m.

Fitness Frenzy (13-17, Nom. Fee) - Senses Fitness Center - 7:00 p.m.



TASTING CLASSES

Cognac Tasting (21+) - Cove Cafe (Nom. Fee, Pre Book) - 10:00 p.m.

Please make reservations for tastings at Guest Services for a nominal fee.

Tasting Seminars are only for Guests 21 and Older.



CLUB 18*21 - MINI GOLF

Goofy's Sports Deck, Deck 13, Aft - 4:30 p.m.

CLUB 18*21 - MIXER

O'Gills Pub, Deck 4, Aft - 10:00 p.m.

ART OF THE THEME SHOW TOUR

Pre-Book at Guest Services, Deck 3, Midship

Join us on a guided ship tour and discover the key ingredients that make the Disney Fantasy cruise ship one-of-a-kind.

LIVE GUITAR WITH JOHN KEVISH

Currents, Deck 13, Forward - 4:30 p.m. & 5:30 p.m.

O'Gills Pub, Deck 4, Aft - 7:45 p.m. & 11:15 p.m.

Join John Kevish as he plays live guitar for your listening pleasure.

THE QUEST

The Tube, Deck 4, Aft - 10:00 p.m.

Enjoy the wildest and wackiest scavenger team event on the seven seas!

LONDON ROCKS

The Tube, Deck 4, Aft - 11:00 p.m.



Hop onboard and hit the dance floor as we take you on a ride through the charts, partying it up to some of the hottest British hits! With a special performance by the Underground Dancers.

SENSES SPA BINGO

D Lounge, Deck 4, Midship

Card Sales - 7:15 p.m.

Game Starts - 7:30 p.m.

Four CASH prize up for grabs plus great spa prizes to be won, including a mini facial and massages, courtesy of the Senses Spa and Salon.



YOUTH ACTIVITY HIGHLIGHTS

DINE & PLAY

A convenience for families dining at 8:15 p.m., our Youth Activities Counselors will be available at 9:15 p.m. at the entrance of Royal Court, Enchanted Garden and Animator's Palate dining rooms to bring registered children to join the fun in the Youth Activity areas.



Deck 5, Midship (7-1440)
(3-12 years old) **9:00 a.m. - 12:00 mid**

LITTLE EINSTEIN'S ADVENTURE

11:00 a.m.

Your junior cruisers will have the time of their lives with this program inspired by their favorite show with fun activities guaranteed to make them feel like a little genius!

PLUTO'S PAJAMA PARTY

9:30 p.m.

Bring the little ones in their pajamas but there will be anything but sleep when Pluto and friends host the ultimate slumber party!



Deck 5, Midship (7-1445)
(3-12 years old) **9:00 a.m. - 1:00 a.m.**

PISTON CUP CHALLENGE

9:30 a.m.

It's Dinoco time and you're part of the pit crew! Design your own race car and see if you've got what it takes to end up in the Winner's Circle!

SUPER SLOPPY SCIENCE - FLUBBER

4:00 p.m.

Join Professor Make-O-Mess in some of the most extreme experiments you will ever seen in the world of Super Sloppy Science!



Deck 13, Midship (7-9743)
(11-14 years old) **10:00 a.m. - 1:00 a.m.**

ESPN DREAM TEAM DRAFT DAY - BASEBALL

1:45 p.m.

Play ball! Join the "Commissioner" and engage in this interactive fantasy baseball draft unlike anything you've ever seen! Can YOU draft the greatest baseball team of All-Time?

GHOST VOYAGERS

10:15 p.m.

The ship has come upon some mysterious waters and strange things are afoot. Join a team of paranormal experts to help investigate the area and track down any evidence of ghostly beings on the ship.



Entrance on Deck 4, Forward (7-9418)
(14-17 years old) **10:00 a.m. - 2:00 a.m.**

DISNEY ANIMATION: CREATING A CHARACTER

6:15 p.m.

Go behind the scenes at Walt Disney Animation Studios as Walt Disney himself talks about his most famous characters, then learn the basic techniques of drawing Mickey and Donald in this fun and interesting enrichment program.

PUMP IT UP

9:00 p.m.

Join us in the Fitness Center for a Teen Only workout. Meet in Vibe to join in!

BUENA VISTA THEATRE

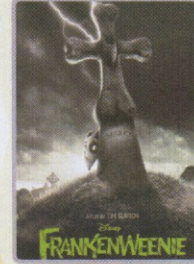
Today's Movies

DOLBY 3D



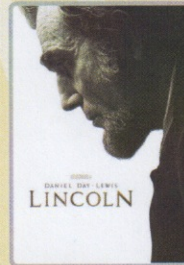
8:00 a.m., 5:45 & 8:30 p.m.
Duration: 1 hr 41 min
Rating: PG

DOLBY 3D



1:15 p.m.
Duration: 1 hr 24 min
Rating: PG

DOLBY 3D



3:00 p.m.
Duration: 2 hr 30 min
Rating: PG-13

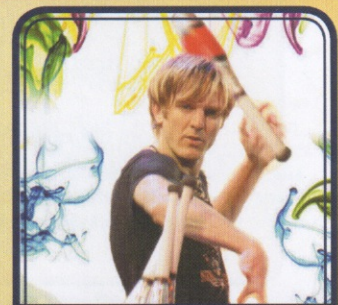


11:00 p.m.
Duration: 1 hr 53 min
Rating: PG



Bring the entire family and test your Disney knowledge in the high-tech interactive game show, Family Fusion.

*D Lounge,
Deck 4, Midship,
10:15 p.m.*



ADULT CABARET

Featuring the Comedy & Juggling of Mike Price, as he entertains you in this adult exclusive show.

*The Tube, (18+)
Deck 4, Aft,
10:30 p.m.*

YOUTH ACTIVITIES OPEN HOUSE

Open House is an opportunity for all to come and participate in a variety of exciting activities and free time in the Oceaneer Club, Lab and Edge throughout the cruise. During these times secured programming will still be offered in the other venue for those looking to check their children into care.

Disney's Oceaneer Lab: 3:00 p.m. - 5:00 p.m.
Disney's Oceaneer Club: 9:00 a.m. - 10:30 a.m.

Edge: 9:00 a.m. - 10:00 a.m.

MORE TO ENJOY WHILE ONBOARD



PLAN YOUR NEXT CRUISE

Book your next Disney Cruise Line vacation today and save! Don't waste time! Book your next cruise today and you'll save 10%, receive up to a \$200 onboard credit, and pay a reduced deposit! Visit the Future Cruise Sales Desk, Deck 4, Midship, or call extension 7-2848 to learn more.



DISNEY VACATION CLUB® GROUP PREVIEW

Want to learn more about taking magical vacations year after year? Please see a Disney Vacation Club representative on Deck 4, Midship, or call 7-2805 from your stateroom phone for more information about our interactive group presentation.



DIAMOND & GEMSTONE SEMINAR

9:00 a.m. in La Piazza Deck 4, Aft - Join Shopping Guides Johan & Marissa and become an expert on Diamonds, Tanzanite & Exotic Gems. This not to be missed presentation will save you time and money. Free Tanzanite earrings and a raffle to win a Tanzanite Pendant for all.

ONBOARD AIRLINE CHECK IN

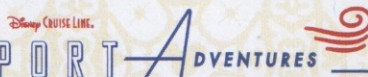
If you would like to have your boarding passes printed for you onboard and have your luggage taken to the airport for you, register before Wednesday. If you have a Disney Cruise Line airport transfer to Orlando International Airport and fly with one of the participating airlines, stop at Guest Services, Deck 3, Midship to register.

SURF @ SEA

\$0.75 per minute, or save money by buying blocks of time. \$55.00 for 100 minutes, \$100.00 for 250 minutes and \$150.00 for 500 minutes. Wireless information sheets are available at Guest Services, Deck 3, Midship. *Please note: Due to satellite connectivity, onboard internet service will be noticeably slower than you may be accustomed to and may at times be interrupted or unavailable.*

ON DEMAND TV

Watch Disney movies, Hollywood features, ABC Shows, and even captioned content, plus much more "On Demand" for FREE in the comfort of your stateroom! Bookmark your movie and come back to watch it later. Press MENU on your stateroom television remote control, and follow the prompts.



Welcome to the beautiful Cayman Islands. Take this opportunity to discover Grand Cayman's world renowned snorkeling. Dive down deep and explore the ocean floor on the Atlantis submarine or just sit back, relax and enjoy the sights and sounds of this island on the Grand Cayman Island tour. Visit our friendly Port Adventures team located Deck 5, Midship, and let us answer all your questions about Grand Cayman.

SHOPPING

FRAGRANCE OF THE DAY

Stop by Whitecaps to test our selected fragrance today! Deck 3, Forward.

25% OFF MICHELE WATCHES

Swiss made watches with intricate details. Purchase face and bands separately to personalize the look. Whitecaps, Deck 3, Forward.

BEAUTIFULLY DISNEY

Captivate your mind with Beautifully Disney, a new collection of cosmetics and beauty products exclusive to Disney Parks. Beautifully Disney defines timeless beauty through collections of fairytale nostalgia, unlocking harmonious colors. Through the collections of this new and enchanting line, it is the goal to keep you romanced by the contrast of mysterious yet inviting colors. Whitecaps, Deck 3, Forward.

DESIGNER HANDBAGS

Don't get purse envy! Pass through Whitecaps and pick from our selection of designer handbags, including Vera Bradley totes and bags. Deck 3, Midship.

2013 IS YOUR YEAR!

Celebrate 2013 in Disney Cruise Line exclusive dated merchandise! Mickey's Mainsail, Deck 3, Forward.

BIBBIDI BOBBIDI BOUTIQUE

Be a part of a new world with an exclusive Under The Sea makeover! Shimmer like a mermaid with your two piece Ariel swim suit. Makeover includes colored sun block, color changing flower necklace, hair clip, and nail polish. Deck 5, Midship.

Due to port regulations, when the ship is docked, the stores will remain closed.



PAMPER PACKAGE

- 50 minute Full Body Massage
- Foot & Ankle Massage
- Indian Scalp Massage
- 25 Minute Booster Facial

ONLY \$149

Call Senses Spa & Salon, 7-1465

DOONEY & BOURKE EXCLUSIVE

Check out our exclusive Disney Fantasy Inaugural Dooney and Bourke collection available in Whitecaps.



GET THE PICTURE!

Do you only need a small number of digital images of your photos? We now offer two digital packages where you can choose your selected images in the comfort of your own home! Send them to friends or upload them on social media sites, the choice is yours! Please see one of our friendly Shutters staff to explain this great new product. Your photos will be available for viewing on our interactive kiosks in Shutters digital as well as in your personal photo folder in Shutters, Deck 4, Midship, Conditions applies.

**Please note that photos are available for viewing on our interactive photo kiosks approximately five hours after being taken and are only available for purchase during this cruise.*

IMPORTANT INFORMATION

Security Notice

All Guests (including children) who wish to disembark the ship are required to present their Key to the World card at the gangway. A photo ID is also required for those Guests who are 18 years of age or older. Guests under the age of 18 are required to have a Parent, Guardian or other responsible adult sign an authorization form at the time it is given out if they wish to go ashore unaccompanied. Authorization forms are available at the gangways and Guest Services.

Please Note:
Please remember to use plenty of sunscreen & mosquito/ Insect repellent when venturing ashore.

Cold and Flu Reminder

Please wash hands frequently and thoroughly, particularly before meals. Contact the Health Center by dialing 7-1923, should anyone in your party become ill.

Corridor Quiet Hours

As a courtesy to all our Guests, please recognize quiet hallway hours from 10:00 p.m. til 8:00 a.m.

Inclement Weather

For the safety of all Guests, outdoor events may be changed due to unforeseen weather conditions.

Environmental Message

With Disney's commitment to the Environment, please refrain from throwing anything over the Ship's side. Thank you!

No Reserved Seats Policy

As a courtesy to all our Guests, we kindly advise that the saving of seats is not permitted in the Walt Disney Theatre, and the saving of the sun loungers is not permitted on Deck 11, 12, and 13. Items left unattended will be returned to lost and found at Guest Services, Deck 3 Midship.

Smoking

For the comfort of our guests the following areas are designated as Smoking areas: - Promenade Deck (Deck 4), smoking is permitted Port Side, Aft only from 6:00 p.m. to 6:00 a.m.

- Currents - Deck 13, Forward, Port Side.
- Meridian Bar - Deck 12, Aft, Port Side, outside.
- Smoking is permitted on stateroom verandahs.
Smoking is prohibited inside all guest staterooms. Guests found smoking in their staterooms will be charged a \$250 stateroom recovery fee.

Walt Disney Theatre

Theatrical performances may use artificial fog, strobe lights, pyrotechnics and other special effects. For the safety of our performers and the comfort of those around you, the use of any photography, video recording device or any electronic equipment is prohibited.

Verandah Safety

Please do not leave any combustible materials on your balcony when not present in your stateroom for safety reasons.

Morning	8:30	8:45	9:00	9:15	9:30	9:45	10:00	10:15	10:30	10:45	11:00	11:15	11:30	11:45	12:00	12:15	12:30	12:45	1:00	1:15	1:30
FUNNEL VISION	A Bug's Life (G) Funnel Vision						Monsters, Inc. (G) Funnel Vision						Toy Story (G) Funnel Vision > 1:51 p.m.								
BUENA VISTA THEATRE	Brave DOLBY 3D (PG) < 8:00 p.m. Duration: 1 Hours 41 Minutes												Frankenweenie (PG) 3D Duration: 1 Hours 24 Minutes								
CHARACTER	Goofy Lobby Atrium (P)		Phineas & Ferb Lobby Atrium (H)		Lilo, Stitch Lobby Atrium (P)		Woody, Jessie Lobby Atrium (V)		Goofy Lobby Atrium (P)		Jake Dk 4, Mid		Woody, Jessie Lobby Atrium (V)								
FUN FOR ALL AGES	D Lounge 		Disney Animation: Cartoon Physics D Lounge				Disney Trivia O'Gills Pub		Port Adventures - Please check your tickets for meeting times and locations												
	Midship Detective Agency Deck 2 & 5 Midship						Diamond and Gemstone Seminar La Piazza						Board Games Available in O'Gills Pub O'Gills Pub								
ADULTS	Friends of Bill W. Outlook, Deck 14, Mid		Body Sculpt Boot Camp (Nom. Fee) Senses Fitness Center				Books and Magazines available in Cove Cafe														
VIBE 14-17 YEARS OLD							Vibe Opens		Chillin' in Vibe		Smoothie Time		Games Galore		Ping Pong		Chillin' in Vibe				
EDGE 11-14 YEARS OLD	Open House				Catch & Push				Spoons		Fifa Challenge		Ninja								
OCEANEER LAB 3-12 YEARS OLD	Create a Door Magnet						Piston Cup Challenge				Human Bingo		Lunch		Parachute Games						
	Open House										Story Time in Andy's Room				Create A Musical Instrument						
OCEANEER CLUB 3-12 YEARS OLD	Mickey's Puzzle Playtime				Magic Playfloor				Little Einstein's Adventure												

Afternoon	1:45	2:00	2:15	2:30	2:45	3:00	3:15	3:30	3:45	4:00	4:15	4:30	4:45	5:00	5:15	5:30	5:45	6:00	6:15	6:30	6:45	
FUNNEL VISION	DJ Request Fest Deck Stage, Deck 11, Midship						Jam Fest at Sea Funnel Vision						Toy Story 2 (G) Funnel Vision > 7:17 p.m.									
BUENA VISTA THEATRE	Frankenweenie DOLBY 3D (PG) < 1:15 p.m. Duration: 1 Hours 24 Minutes						Lincoln (PG-13) Duration: 2 Hours 30 Minutes						Brave DOLBY 3D (PG) Duration: 1 Hours 41 Minutes > 7:21 p.m.									
CHARACTER	Goofy Goofy's Sports Deck						Max Goofy's Sports Deck		Tinker Bell Lobby Atrium (V)		Pinocchio Dk 4, Mid		Mickey Lobby Atrium (H)		Hook & Smeek Dk 4, Mid		Chip & Dale Lobby Atrium (H)		Aladdin Dk 4, Mid			
FUN FOR ALL AGES							Jam Fest at Sea Deck Stage						Playhouse D Lounge D Lounge		Live Piano with Gayla Smith Lobby Atrium							
	Live Music with The Switch Deck 12, Forward		DJ Request Fest Deck Stage, Deck 11, Midship				Live Music with The Switch Deck 12, Forward				Disney Animation: Cartoon Physics D Lounge		Disney Vacation Club Group Preview The Tube									
ADULTS	Books and Magazines available in Cove Cafe Cove Cafe						Group Cycling Senses Fitness Center		Art of The Theme Show Tour Pre-Book at Guest Services						Club 18*21 - Mini Golf Goofy's Sports Deck		Fab Abs Senses Fitness Center		Live Guitar with John Kevish Currents			
VIBE 14-17 YEARS OLD	Chillin' in Vibe		Video Scavenger Hunt				Anyone Can Cook		Dodgeball		Mad Gab		Brain Teasers		Disney Animation: Creating a Character							
EDGE 11-14 YEARS OLD	ESPN Dream Team Draft Day - Baseball		Invisible Maze				Games Galore		Dodgeball		Mad Gab		Create a Door Hanger		Stop The Boat							
OCEANEER LAB 3-12 YEARS OLD	Magic Playfloor		Circle Games		Open House				Super Sloppy Science - Flubber		Dinner		A to Z Scavenger Hunt		Wii Challenge							
	Charades						Heffalump Expodishun						Big Top Fun Fest!									
OCEANEER CLUB 3-12 YEARS OLD	Matinee Movie		Cruisin' with Crush				Wii Challenge															
	Marshmallow Olympics																					
OUT AND ABOUT	Shuffleboard Deck 4																					

Evening	7:00	7:15	7:30	7:45	8:00	8:15	8:30	8:45	9:00	9:15	9:30	9:45	10:00	10:15	10:30	10:45	11:00	11:15	11:30	11:45	12:00
FUNNEL VISION	The Incredibles (PG) Funnel Vision						The Shaggy Dog (PG) Funnel Vision														
BUENA VISTA THEATRE	Brave DOLBY 3D (PG) Duration: 1 Hours 41 Minutes						Wreck-It Ralph DOLBY 3D (PG) Duration: 1 Hours 53 Minutes > 12:55 a.m.														
CHARACTER	Mickey Lobby Atrium (H)		Snow White Lobby Atrium (P)		Ariel Lobby Atrium (P)		Aladdin Lobby Atrium (P)		Lilo, Stitch Dk 4, Mid		Lilo, Stitch Lobby Atrium (V)		Cinderella Lobby Atrium (V)								
FUN FOR ALL AGES	Bingo Pre Sales		Senses Spa Bingo 						Disney Karaoke D Lounge				Disney Karaoke D Lounge								
	Know Your Family? The Tube						Live Music with June Gypsies Lobby Atrium		Live Music Lobby Atrium												
ADULTS	70's Music Trivia O'Gills Pub		Live Guitar with John Kevish O'Gills Pub				The Quest The Tube		Club 18*21 - Mixer O'Gills Pub		Adult Cabaret: Mike Price - Juggling The Tube		London Rocks The Tube		Siverscreen Meets Broadway La Piazza		70's Remix Followed by Going Underground with Guest DJ Clint Kuper The Tube				
VIBE 14-17 YEARS OLD	Disney Animation		F.I.F.A. Challenge		Dance Central Challenge		Pump It Up		Smoothie Time		Gender Wars		Ghost Voyagers								
EDGE 11-14 YEARS OLD	Stop The Boat		Anyone Can Cook		Hold The Phone		Gender Wars		Ghost Voyagers		Pajamarama Movie Night										
OCEANEER LAB 3-12 YEARS OLD	Pirates of the Caribbean: Tides of Fortune		GAGA Ball		Dance Party		Super Sloppy Science - Volcanoes		XBox® Kinect™ Tournament		Elephant Soccer										
	Pictionary						Crafts Galore														
OCEANEER CLUB 3-12 YEARS OLD	Memory Wall		Once Upon a Time		Crafts Galore		Go Fetch		Pluto's Pajama Party		Movie Time										
	Play-Doh Creations		Mickey's Puzzle Playtime		Hide & Seek		Craft Corner		Magic Playfloor												
OUT AND ABOUT	A to Z Scavenger Hunt Deck 4																				

Symbol for activities that will be repeated during the cruise

Youth Activities Open House

FOLD

Fold along the dotted lines and take me with you so you don't miss any of the fun!

FOLD

IN THE SPOTLIGHT SERIES

SOLVE IT! SERIES

JUMP UP! SERIES

CREATE & INVENT SERIES

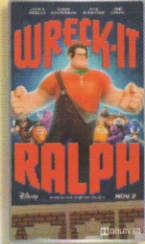
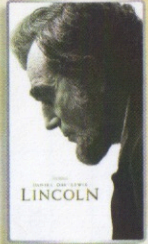
CLUBHOUSE SERIES

STORYBOOK SERIES

MONDAY, APRIL 15, 2013 - GRAND CAYMAN

BUENA VISTA THEATRE

DOLBY 3D DOLBY 3D



8:00 a.m., 5:45 & 8:30 p.m.

Duration:
1 hr 41 min
Rating: PG

1:15 p.m.

Duration:
1 hr 24 min
Rating: PG

3:00 p.m.

Duration:
2 hr 30 min
Rating: PG-13

11:00 p.m.

Duration:
1 hr 53 min
Rating: PG

Character Appearances

CAPTAIN HOOK & MR SMEE

Deck 4, Balcony - 9:00 a.m., 10:00 a.m., 5:15 p.m., 7:15 p.m. & 9:30 p.m.

GOOFY

Lobby Atrium (P) - 9:00 a.m. & 10:00 a.m.
Goofy's Sports Deck - 3:00 p.m.

BUZZ LIGHTYEAR

Lobby Atrium (V) - 9:00 a.m. & 10:30 a.m.

PHINEAS & FERB

Lobby Atrium (H) - 9:15 a.m. & 10:30 a.m.

JAKE - THE NEVERLAND PIRATE

Deck 4, Balcony - 9:30 a.m. & 10:30 a.m.

LILO & STITCH

Lobby Atrium (P) - 9:30 a.m. & 10:30 a.m.
Preludes - 5:30 p.m. & 9:30 p.m.
Deck 4, Balcony - 8:15 p.m.

WOODY & JESSIE

Lobby Atrium (V) - 9:45 a.m. & 11:00 a.m.

MINNIE MOUSE

Deck 4, Balcony - 11:00 a.m.
Lobby Atrium (H) - 9:30 p.m.

DONALD DUCK

Lobby Atrium (P) - 11:00 a.m.
Lobby Atrium (H) - 7:45 p.m.

MAX

Goofy's Sports Deck - 3:30 p.m.

TINKER BELL

Lobby Atrium (V) - 4:30 p.m., 5:30 p.m., 7:30 p.m. & 9:30 p.m.

PLUTO

Lobby Atrium (P) - 4:45 p.m.

PINOCCHIO

Deck 4, Balcony - 4:45 p.m. & 7:45 p.m.
Preludes - 10:00 p.m.

MICKEY MOUSE

Lobby Atrium (H) - 5:00 p.m., 7:15 p.m. & 10:00 p.m.

PETER PAN

Lobby Atrium (P) - 5:15 p.m. & 7:15 p.m.

CINDERELLA

Lobby Atrium - 5:30 p.m. & 9:45 p.m.

CHIP & DALE

Lobby Atrium (H) - 5:30 p.m.

ALADDIN & GENIE

Deck 4, Balcony - 5:45 p.m.
Preludes - 8:00 p.m.

SNOW WHITE & DOPEY

Lobby Atrium (P) - 5:45 p.m. & 9:30 p.m.
Preludes - 7:30 p.m.

ARIEL

Lobby Atrium (P) - 7:45 p.m.
Deck 4, Balcony - 10:00 p.m.

BELLE

Lobby Atrium (P) - 8:15 p.m.

(H) Hallway - (S) Starboard Side - (P) Port Side - (V) Vestibule

YOUTH ACTIVITIES THEMED EXPERIENCES

CLUBHOUSE SERIES

focuses on movement and features content which appeals to younger children.

JUMP UP! SERIES

includes large ground games & movement-oriented activities.

IN THE SPOTLIGHT SERIES

focuses on children's stage presence with lots of activities and enthusiasm.

STORYBOOK SERIES

is designed with a strong connection to the Disney classic stories.

CREATE & INVENT SERIES

will have a tactile focus allowing children to create and admire their work.

SOLVE IT! SERIES

are less active, but will challenge children with problem/solutions-based activities.

YOUTH ACTIVITIES OPEN HOUSE

A non-secured program with activities for families, adults and children of all ages to enjoy together.

SHIP DIRECTORY

YOUTH ACTIVITIES

DISNEY'S OCEANEER CLUB	DECK 5, MID	9:00 AM - 12:00 MID
DISNEY'S OCEANEER LAB	DECK 5, MID	9:00 AM - 1:00 AM
EDGE	DECK 13, MID	10:00 AM - 1:00 AM
VIBE	DECK 4, FWD	10:00 AM - 2:00 AM
IT'S A SMALL WORLD NURSERY	DECK 5, MID	9:00 AM - 11:30 PM

RECREATION

AQUADUCK	DECK 12, MID	9:00 AM - 10:00 PM
AQUALAB	DECK 12, AFT	10:00 AM - 6:00 PM
DONALD'S POOL	DECK 11, MID	6:00 AM - 12:00 MID
GOLF/SPORTS SIMULATORS	DECK 13, AFT	9:00 AM - 6:00 PM
GOOFY GOLF	DECK 13, AFT	8:00 AM - 10:00 PM
GOOFY'S SPORTS DECK	DECK 13, AFT	8:00 AM - 6:00 PM
MICKEY'S POOL	DECK 11, MID	6:00 AM - 11:00 PM
MICKEY'S SLIDE	DECK 11, MID	9:00 AM - 6:00 PM
MIDSHIP DETECTIVE AGENCY	DECK 2 & 5, MID	9:00 AM - 10:00 PM
NEMO'S REEF	DECK 11, MID	9:00 AM - 7:00 PM
PORT ADVENTURES DESK	DECK 5, MID	8:30 AM - 12:00 PM 7:00 PM - 8:30 PM
QUIET COVE POOL	DECK 11, FWD	6:00 AM - 12:00 MID
SATELLITE FALLS	DECK 13, FWD	6:00 AM - 6:00 PM
SENSES FITNESS CENTER	DECK 11, FWD	6:30 AM - 10:00 PM

GENERAL INFORMATION

ARR-CADE	DECK 11, AFT	24 HOURS
DISNEY VACATION CLUB	DECK 4, MID	5:00 PM - 10:00 PM
FUTURE CRUISE SALES DESK	DECK 4, MID	9:00 AM - 11:00 AM 4:00 PM - 6:00 PM 7:30 PM - 10:00 PM
GUEST SERVICES	DECK 3, MID	24 HOURS
MEDICAL HEALTH CENTER	DECK 1, FWD	9:30 AM - 11:00 AM 4:30 PM - 7:00 PM
PORT & SHOPPING DESK	DECK 4, MID	9:30 AM - 10:30 AM 7:30 PM - 8:30 PM
PRELUDES	DECK 3, FWD	5:45 PM - 6:30 PM 8:00 PM - 8:45 PM
SENSES SPA AND SALON	DECK 11, FWD	8:00 AM - 10:00 PM
SHUTTERS PHOTO GALLERY	DECK 4, MID	10:00 AM - 11:00 PM
SHUTTERS DIGITAL	DECK 4, MID	24 HOURS

SHOPPING

BIBBIDI BOBBIDI BOUTIQUE	DECK 5, MID	9:00 AM - 9:00 PM
MICKEY'S MAINSAIL	DECK 3, FWD	6:30 PM - 11:00 PM
QUACKS	DECK 11, MID	
SEA TREASURES	DECK 3, FWD	6:30 PM - 11:00 PM
VISTA GALLERY	DECK 4, MID	7:00 PM - 10:00 PM
WHITE CAPS	DECK 3, FWD	6:30 PM - 11:00 PM
WHOZITS & WHATZITS	DECK 11, MID	9:00 AM - 10:30 AM

DINNER MENU	Animator's Palate: Pacific Rim	DRINK OF THE DAY	Yellow Bird (Alcoholic)	WEATHER FORECAST	Monday: Sunny
	Enchanted Garden: Continental Market Cuisine		Lava Smoothie (Non Alcoholic)		High: 81° F/27° C
	Royal Court: French Cuisine				Tuesday: Partly Cloudy
	Dining Times: 5:45 p.m. & 8:15 p.m.				High: 79° F/26° C

Evening Attire: Cruise Casual

DINING & LOUNGES

BREAKFAST

CABANAS CONTINENTAL	DECK 11, AFT	6:30 AM - 7:00 AM
CABANAS	DECK 11, AFT	7:00 AM - 11:30 AM
ENCHANTED GARDEN	DECK 2, MID	8:00 AM - 10:45 AM
ROYAL COURT	DECK 3, MID	8:00 AM - 9:30 AM

LUNCH

CABANAS	DECK 11, AFT	11:30 AM - 2:15 PM
FILLMORE'S FAVORITES	DECK 11, MID	10:30 AM - 6:00 PM
LUIGI'S PIZZA	DECK 11, MID	10:30 AM - 6:00 PM
ROYAL COURT	DECK 3, MID	12:00 PM - 1:30 PM
TOW MATER'S GRILL	DECK 11, MID	10:30 AM - 11:00 PM

DINNER

ANIMATOR'S PALATE	DECK 3, AFT	5:45 PM & 8:15 PM
ENCHANTED GARDEN	DECK 2, MID	5:45 PM & 8:15 PM
ROYAL COURT	DECK 3, MID	5:45 PM & 8:15 PM
CABANAS TABLE SERVICE	DECK 11, AFT	6:30 PM - 8:30 PM
PALO (18+) (RESERVATIONS REQ. & NOW FEE APPLIES)	DECK 12, AFT	6:00 PM - 8:30 PM
REMY (18+) (RESERVATIONS REQ. & NOW FEE APPLIES)	DECK 12, AFT	6:00 PM - 8:30 PM

LATE NIGHT SNACKS

LA PIAZZA (18+)	DECK 4, AFT	10:45 PM - 11:45 PM
LUIGI'S PIZZA	DECK 11, MID	9:30 PM - 12:30 AM

ADDED FEATURES

BEVERAGE STATION	DECK 11, MID	24 HOURS
EYE SCREAM	DECK 11, MID	11:00 AM - 11:00 PM
ROOM SERVICE	DIAL 0	24 HOURS

ENTERTAINMENT - LOUNGES - BARS

Adults must be 21 and older to consume alcoholic beverages.

BON VOYAGE	DECK 3, MID	10:30 AM - 11:00 PM
COVE BAR (18+)	DECK 11, FWD	11:00 AM - 11:00 PM
COVE CAFE (18+)	DECK 11, FWD	7:00 AM - 12:00 MID
CURRENTS (18+)	DECK 13, FWD	10:00 AM - 11:00 PM
D LOUNGE	DECK 4, MID	SHOWTIMES
FROZONE TREATS	DECK 11, MID	11:00 AM - 11:00 PM
LA PIAZZA	DECK 4, AFT	2:30 PM - 12:00 MID
MERIDIAN (18+)	DECK 12, AFT	5:00 PM - 12:00 MID
O'GILLS PUB (18+ AFTER 9:00 PM)	DECK 4, AFT	3:00 PM - 12:00 MID
OOH LA LA (18+)	DECK 4, AFT	5:00 PM - 12:00 MID
OUTLOOK	DECK 14, MID	SUNSET TIMES
SKYLINE (18+)	DECK 4, AFT	5:00 PM - 12:00 MID
THE TUBE (18+)	DECK 4, AFT	10:00 PM - 2:00 AM
VISTA CAFE	DECK 4, MID	7:30 AM - 11:00 PM
WAVES	DECK 12, AFT	10:00 AM - 6:00 PM

Consumers who order raw or partially cooked, ready-to-eat food of animal origin, are hereby informed that the food is not sufficiently cooked to ensure its safety.

All Ashore: Approx. 10:45 a.m.
Last Tender: Approx. 4:30 p.m.

Ship's Agent In Grand Cayman

Bodden Shipping Agency, Fifth Floor,
Room 508, Gorang Avenue,
GT Grand Cayman,
Tel: 345-949-6254 or 345-949-7424

IMPORTANT NUMBERS

Fire/Security: 7-3001
Medical EMERGENCY: 7-3000
Health Center: 7-1923



TENDERING INFORMATION FOR GRAND CAYMAN

When arriving in Grand Cayman tomorrow, we will be utilizing small boats to transport you to the island shore. This is called a Tender Service, using Tender Boats. This service is provided by a local company in Grand Cayman. In order to make sure every Guest is transported safely, we suggest that you follow the Safety Guidelines below.

SAFETY INSTRUCTIONS:

1. Do not crowd in gangway areas.
2. Have your hands free to use the railings.
3. Wear comfortable, safe shoes since areas might be slippery.
4. Wait for a signal from the Crew Member in charge to board or disembark.
5. Follow instructions of the Crew Members.
6. Use any hand rails and do not jump or run while boarding.
7. Sit down while in the tender boat at all times. Do not stand up as the tender boat approaches the pier or the ship. Remain seated in your seat row until you can step directly to the boarding point without standing in line. Keep in mind that there may be sudden movements while the tender boat is along side the ship, due to the motion of the seas.
8. No smoking in the tender or in line.
9. Notify Crew Member if you have any problems or feel uncomfortable.

Please listen to all public area announcements for updates.

ALL GUESTS

You will need your 'Key to the World' card (every Guest) and Photo ID (Guests 18 years and older) ready as you debark the ship. Please follow the tendering process below that pertains to you. Tenders will run continuously throughout the day from the Disney Fantasy to Grand Cayman Royal Water Pier and back. **Last Tender back to the ship is at 4:30 p.m.**

Please note: Regulation on agriculture and food; Meat, fruit, sandwiches, dairy products, vegetables, plants and seeds are not allowed on or off of the ship.

FOR GUESTS WITHOUT PORT ADVENTURES

Tendering will begin at approximately 10:45 a.m. with a Tender Ticket process in the Animator's Palate, Deck 3, Aft. We ask that you collect all members of your party before proceeding to Animator's Palate, at which point you will remain standing until the next available tender boat is ready for boarding. Ticket distribution will run until approximately 1:00 p.m. or when open tenders are announced, allowing you to proceed directly to a gangway on Deck 1 without a ticket.

FOR GUESTS GOING ON PORT ADVENTURES

- **If your Port Adventure meets before 12:30 p.m.**
Please meet at your designated excursion meeting location onboard at the time listed on your Port Adventure Ticket.
- **If your Port Adventure meets at 12:30 p.m. or later and you ARE NOT planning to go ashore prior to your excursion meeting time:**
Please meet on the Royal Water Pier. You should allow at least **30 minutes** for tender travel time before your excursion meeting time on the pier. An announcement will be made when tender tickets are no longer required - approximately 1:00 p.m. or when announced. Until then, please follow the process outlined above for guests without Port Adventures, please meet in Animators Palate, Deck 3, Aft to collect a tender ticket.
- **If your Port Adventure meets at 12:30 p.m. or later and you'd like to spend the morning in Grand Cayman, then meet your excursion on the pier:**
You may go ashore starting at approximately 10:45 a.m. Please meet in Animators Palate, Deck 3, Aft, to pick up a Tender Ticket and follow the process as outlined above for guests without Port Adventures. You should allow at least **30 minutes** for tender travel time. Remember to meet on the pier at the specified time listed on your Port Adventure ticket.

Towels will be provided for all water-based excursions. For those Guests not on a Port Adventure, towels are available on the pool deck, Deck 11. **We kindly ask you to return all towels back to the ship.** All excursions will return to the Royal Water Pier area, where tender service will run continuously back to the Disney Fantasy until 4:30 p.m.

THE LAST TENDER BACK TO THE DISNEY FANTASY WILL LEAVE THE ROYAL WATER PIER AT 4:30 P.M. WE ENCOURAGE GUESTS TO RETURN EARLIER TO AVOID POSSIBLE LONG DELAYS FOR THE RETURN TENDER SERVICE.

GRAND CAYMAN

SHOPPING MAP



International Luxury Brands

BVLGARI WATCHES & JEWELRY

Diamonds International Watch & Design, Kirk Freeport

CARTIER WATCHES

Cartier Boutique, Kirk Freeport

FOREVERMARK

Diamonds International

HUBLOT WATCHES

Kirk Freeport

IWC WATCHES

Kirk Freeport

MONT BLANC WATCHES

Kirk Freeport

ROLEX WATCHES

Kirk Freeport

ROMAIN JEROME WATCHES

Kirk Freeport

TAG HEUER WATCHES

Kirk Freeport

ZENITH WATCHES

Diamonds International Watch & Design

Designer Brands

Ammolite Jewelry by Korite

Diamonds International

Bremont Watches

Diamonds International Watch & Design

Bulova Watches

Diamonds International, Tanzanite International, Diamonds International Watch & Design

Crown of Light Diamonds

Diamonds International

Effy Balissima Jewelry Collection

Effy Jewelry

Effy Diversa Jewelry Collection

Effy Jewelry

Ernst Benz Watches

Diamonds International, Diamonds International Watch & Design

Fendi Watches

Diamonds International Watch & Design

Fritz Watches

Diamonds International, Tanzanite International, Diamonds International Watch & Design

Gabriel & Co. Jewelry

Kirk Freeport

Gift Diamond Jewelry

Diamonds International

Glamrock Watches

Kirk Freeport

Kabana Jewelry

Diamonds International Watch & Design

Lauren G Adams Jewelry

Diamonds International

Marahlago Larimar Jewelry

Diamonds International

Mark Henry Alexandrite Jewelry

Milano Diamond Gallery

Movado Watches

Diamonds International, Tanzanite International, Diamonds International Watch & Design

Parazul Handbags & Accessories

Diamonds International, Tanzanite International, Diamonds International Watch & Design

Philip Stein Watches

Diamonds International, Tanzanite International, Diamonds International Watch & Design

Raymond Weil Watches

Kirk Freeport

Safi Kilima Tanzanite Jewelry

Diamonds International, Tanzanite International

Unity Diamond Jewelry

Milano Diamond Gallery

Get all of your essential and time-saving Information for shopping ashore from Marissa & Johan!

STORE #

1a

DIAMONDS INTERNATIONAL POWER HOUR

12:30-2:00PM Free professional face painter & cupcakes for kids

4a

EFFY JEWELRY ALL DAY RAFFLE

Enter to WIN a DiVersa pendant! (winner announced onboard)

An Overview of Grand Cayman

Of the three Cayman Islands, Grand Cayman, Cayman Brac and Little Cayman, Grand Cayman is the largest and most popular island and home of the capital city George Town. Visitors flock to the island to relax and enjoy the famous Seven Mile Beach, a long stretch of soft white sand fringed by clear turquoise water, rated one of the most beautiful beaches in the entire Caribbean. It was also the very beach where they filmed Tom Cruise in the movie, "The Firm." Grand Cayman and the Caymans in general are very well known for their diving and snorkeling.

Named after the Carib Indian word for marine crocodile, Caymanians are proud of their sea-going heritage, as evidenced by the legend of "The Wreck of the Ten Sails." The story tells of a ship wrecked off the eastern coast of Grand Cayman, whose crew, in trying to warn other ships away from the reef, instead drew 9 more vessels onto it. Through the heroics of the local people, not a single life was lost. In gratitude, King George III declared the Cayman Islands forever exempt from taxes, which turned in to a billion dollar gift. There is no income tax, property tax, capital gains tax, and corporation tax, making it a very advantageous place for wealthy individuals or companies to do business. Today, tourism and the international financial industry form the basis of Cayman's strong economy and prosperity.

Docking/Anchorage:

Ships anchor outside the harbor, west of George Town (this is a tender port).

Port Adventures:

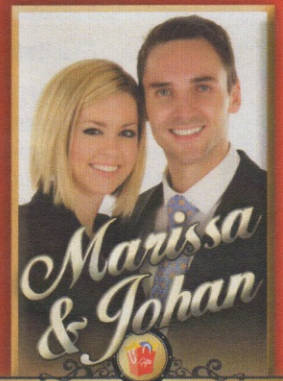
Check your ticket for the correct meeting time and location for your tour. Your Port Adventures Team will direct you to your transportation.

In Case of Emergency:

Bodden Shipping Agency Limited
Citrus Grove 5th Floor 106 Goring Ave. Grand Cayman
(345) 949-6254/7424
boddenshipping@boddenholdings.com

Don't Forget Your:

- Photo ID & Key to the World Card
- FREE Diamond Charm Bracelet Card
- Cash and/or Credit Cards



SHOPPING GUIDES

See Marissa & Johan for your VIP shopping card!

PORT SHOPPING MAP

DIAMONDS INTERNATIONAL

#1 Recommended Store in the Caribbean

1a 1b DIAMONDS INTERNATIONAL

- Over 130 locations, and still family-owned
- Trusted retailer delivering value since 1986
- DTC Sightholder
- Largest Caribbean inventory of GIA and EGL certified diamonds
- Major diamond brands: Crown of Light and Forevermark
- Top Designers: Ammolite by Korite, Gift, Lauren G Adams, Marahago Larimar and Safi Kilima
- Timepieces: Bulova, Ernst Benz, Fruitz, Movado & Philip Stein
- Selection of Parazul handbags and accessories
- Design your own piece – and take it when you sail
- Lifetime upgrade: 100% credit toward your new diamond
- Widest array of bridal, anniversary and engagement gifts
- U.S. based customer service center: 1(800) 51- Jewel
- A free diamond charm bracelet or free charm at this location
- A wide range of payment options
- Friendly and knowledgeable staff in a comfortable atmosphere

TANZANITE INTERNATIONAL

#1 Recommended Store for all Tanzanite

2 TANZANITE INTERNATIONAL

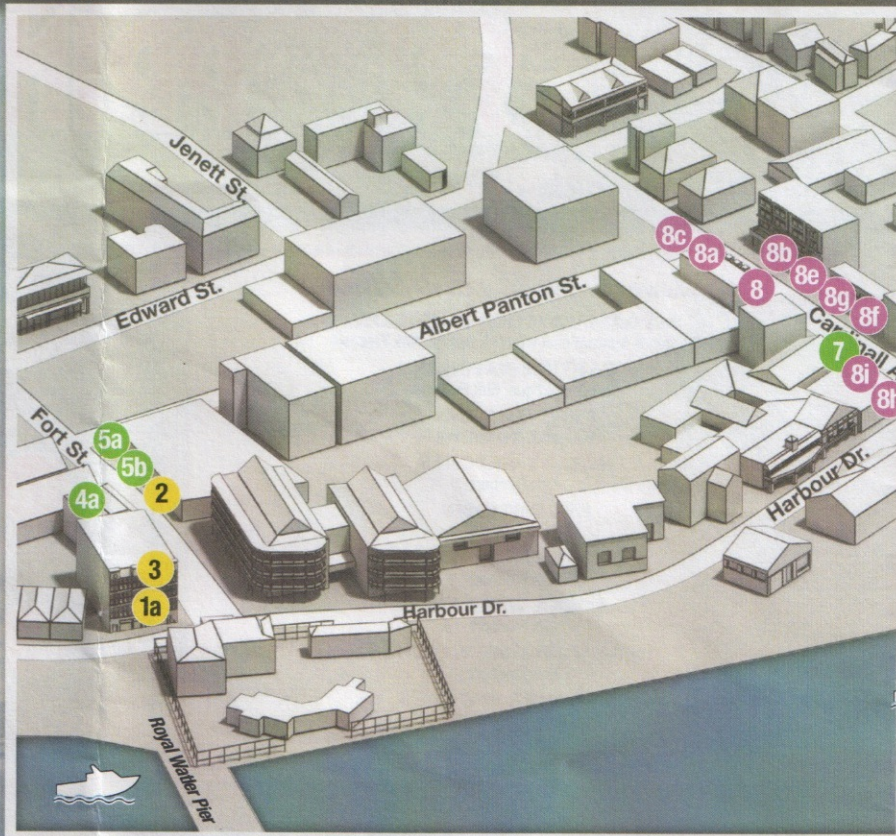
- The Caribbean's largest tanzanite inventory of loose or set goods
- We buy at the source – you get the savings
- Ask how to get your free necklace and tanzanite pendant
- Browse the Safi Kilima collections: Shira, Mawenzi Mlima or Kibo
- Choose from delicate lavender to rich purplish-blue colors
- Tanzanite studs start at \$139
- Timepieces: Bulova, Fruitz, Movado and Philip Stein
- Selection of Parazul handbags and accessories
- Select casual or elegant earrings, pendants, bracelets & necklaces
- Rare tanzanite discovered in 1967 in only one Tanzanian locale
- Each piece has a certificate of authenticity
- Graduate gemologists & master jewelers provide certified appraisals
- New York-based customer service center

DIAMONDS INTERNATIONAL WATCH & DESIGN

Fine Watches and Designer Jewelry

3 DIAMONDS INTERNATIONAL WATCH & DESIGN

- Experience the foremost jewelry trends and latest styles
- Luxury jewelry, gemstones and exquisite timepieces
- The best selection in the Caribbean
- Selection of Parazul handbags and accessories
- Timepieces: Bvlgari, Bulova, Movado, Ernst Benz, Fendi, Fruitz, Zenith, Bremont and Philip Stein
- Watch & jewelry experts and gemologists ready to serve you
- Top designers jewelry by Kabana



4a 4b EFFY JEWELRY

- Only Authorized Retailer of DiVersa and Balissima
- DiVersa by Effy, the original changeable jewelry, starting at \$195
- DiVersa's Quadra collection by Effy showcases 4 looks in 1
- Balissima by Effy is vibrant sterling silver & gold with gemstones
- Great selection of colored gemstones and tanzanite
- Gento by Effy has men's rings, bracelets, cufflinks & necklaces
- Family owned since 1979, manufacturer direct duty free savings
- Lifetime Warranty, photo appraisals and NY Customer Service
- Redeem your free 1/2 ct gemstone pendant coupon at this location

5a 5b MILANO DIAMOND GALLERY

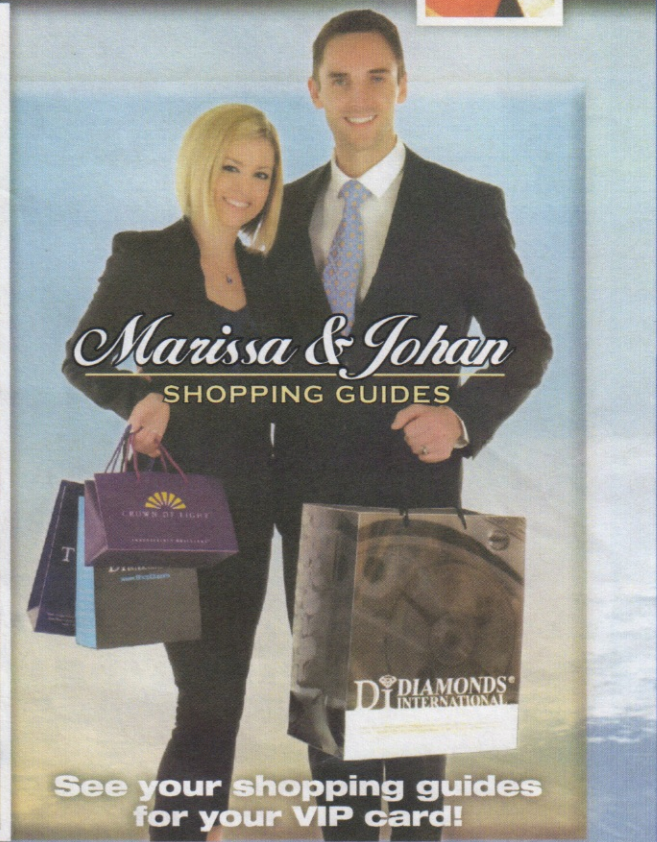
- The Home of Big Looks for Less
- See for yourself: Rare and exotic Mark Henry Alexandrite
- The Unity Collection: "High-quality, big look" diamond jewelry
- Let us bring your "Dreams within Reach"
- Color your collection with yellow, blue or chocolate diamonds
- From mines to market: Luscious tanzanite and emeralds
- Visit us for exceptional service, quality and pricing
- Receive a free watercolor lithograph from your port of call

6 DEL SOL

- World's Largest Color-Change!
- Just Add Sun: See all Del Sol p
- Color-change apparel: T-shirts,
- Solize™ sunglasses: Polarized
- Nail polish & hair accessories:
- Disney products: Magical appa
- Free gift: Free tote bag with the

7 CARILOHA

- Where Everything is Made from
- Feel the difference™: Bamboo
- Why bamboo? Twice as soft ar
- Bamboo-soft apparel: Shirts, sl
- Bamboo bed & bath: Dreamy-s
- Bamboo fitness: Yoga pants, cr
- Free bamboo lei: Just stop in a



© PPI 2013 Grand Cayman Disney 03/12/2013

See your shopping guides for your VIP card!

KIRK FREEPORT

KIRK ON CARDINALL AVENUE

- 8 KIRK FREEPORT ON CARDINALL AVENUE**
 - We are proud to be the official Rolex retailer of Grand Cayman
 - Breitling, Tag Heuer, Gabriel & Co, Omega, Panerai, Cartier, Longines, Rado Roberto Coin, David Yurman, Pandora, Mikimoto
 - Diamonds, sapphires, rubies, emeralds and semi-precious stones
 - Lalique, Baccarat, and exclusive Cayman Islands Signature Collection
- 8a,b LA PARFUMERIE I & II**
 - Fragrance specialty stores—over 450 different fragrances in stock
- 8c,d SWATCH BOUTIQUE TWO LOCATIONS**
 - Swatch watches and jewelry—Flik Flak children's watches available
- 8e KIRK LEATHER**
 - Handbags, luggage, accessories; Fendi, Longchamp, Tumi, Cross
- 8f CARTIER BOUTIQUE**
 - The jeweler of kings offering watches, handbags and accessories
- 8g TIME ZONE**
 - Fossil watches, leather goods, sunglasses and gifts
 - Kipling handbags, luggage, totes, wallets, backpacks & more
- 8h HARBOUR DRIVE JEWELLERS BY KIRK FREEPORT**
 - TAG Heuer, David Yurman, Hublot and Passion Cut Diamonds
 - TAG Heuer Boutique: watches, leather, sunglasses & accessories
 - Chopard Boutique
- 8i MONT BLANC BOUTIQUE**
 - Mont Blanc pens, leather goods, watches, jewelry and sunglasses

KIRK AT BAYSHORE MALL

- 9 KIRK FREEPORT AT BAYSHORE MALL**
 - A 4-minute walk from Royal Watler Terminal
 - We are proud to be the official Rolex retailer of Grand Cayman
 - Breitling, Cartier, Patek Philippe, Tag Heuer, Mont Blanc and more
 - Jaeger LeCoultre, Vacheron Constantin, A. Lange & Sohne, Breguet
 - Roberto Coin, David Yurman, H Stern, Gucci, Chopard
 - Lalique, Baccarat, Swarovski, Hummel, Versace, Royal Doulton
- 9a TOUS**
 - Spanish designer goods from Barcelona—jewelry, clothing and more
- 9b LA PARFUMERIE AT BAYSHORE MALL**
 - Fragrance specialty store—over 450 different fragrances in stock
- 9c LLADRO BOUTIQUE**
 - Many limited edition porcelain pieces—shipping available
- 9d LALIQUE BOUTIQUE**
 - Lalique gifts, jewelry, home furnishings, fragrances and more
- 9e KIRK GALLERY**
 - Waterford Crystal, Wedgewood, Villeroy & Boch, Versace & more
- 9f ALEXANDER KALIFANO**
 - Jewelry and gift items starting at under \$20
 - Pearls, necklaces & bracelets, men's stainless steel jewelry
- 9g TIME ZONE**
 - Fossil watches, leather goods, sunglasses and gifts
 - Kipling handbags, luggage, totes, wallets, backpacks & more

Retailer products change colors with sunlight beach dresses, board shorts etc. sunglasses with lifetime guarantee New styles, colors and more rel, hair accessories & nail polish purchase of two T-shirts

Bamboo apparel, bedding and bath goods id 3° cooler than cotton; hypoallergenic norts, socks, polos, hats and more soft bedding; ships free to your home oss tanks, training jackets and more nd feel the bamboo-soft difference

San Luis Obispo

Chico

Lake Michigan

Lake Ontario

St. Louis

St. Paul

St. Paul

St. Paul

St. Paul

St. Paul

St. Paul

St. Paul

St. Paul

St. Paul

St. Paul

St. Paul

St. Paul

St. Paul



CROWN OF LIGHT®
IRRESISTIBLY BRILLIANT

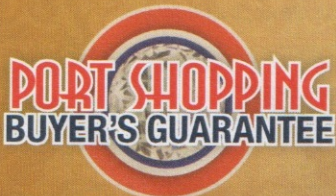


DIAMONDS®
INTERNATIONAL



Anguilla • Antigua • Aruba • Barbados • Belize • Cabo San Lucas • Cancun • Costa Maya • Cozumel
Curaçao • Grand Cayman • Grand Turk • Jamaica • Juneau • Ketchikan • Key West • Nassau
Playa Del Carmen • Puerto Vallarta • Roatan • Skagway • St. Kitts • St. Lucia • St. Maarten • St. Thomas
www.CrownOfLight.com • www.DiamondsInternational.com • 1-800-51-JEWEL

© PPI 2013 Grand Cayman Disney



Shop with confidence at each of the recommended stores. All stores listed on the map have paid a promotional fee and given Disney Cruise Line guests a Buyer's Guarantee valid for 60 days after purchase. This guarantee is valid for repair or exchange. Please note the following conditions that apply to the guarantee: Guest negligence or buyer's regret is excluded. Only appraisals from independent, accredited graduate gemologists not affiliated with any retail jeweler will be considered. Price paid for merchandise or verbal claims or agreements between merchant and guest will not be grounds for returns. Electronics and watches requiring service must be returned by the consumer to the respective manufacturer. All purchases, including fragile items, must be checked before leaving the store. Do not mail merchandise without prior authorization. Guests are responsible for postage and appraisal costs.
PPI Group, 6261 NW 6th Way, Suite 100, Fort Lauderdale, FL 33309, Customer Service: 1.888.774.4768 or 954.377.7777, email: Service@ppigroup.com